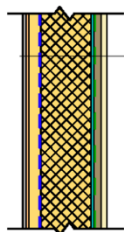
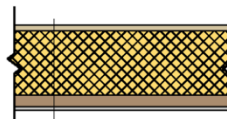


Ēkas ražošanas komplekta standarta specifikācija



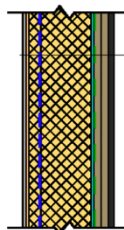
ĀR1

- Koka lats 28x45@600mm;
- Tyvek Housewrap, vēja barjera;
- Reģispsis GU9mm;
- Koka stali 45x195@600mm;
- PAROC (eXtra) akmensvate, 200 mm;
- Tvaika barjera, ELTETE ELT-PEFOIL 200 0.2mm;
- Koka lats 45x45@600mm;
- PAROC (eXtra) akmensvate, 50 mm;



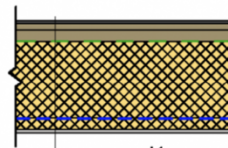
GR1

- OSB/3, 22mm;
- Koka sijas 45x250@600mm;
- PAROC (eXtra) akmensvate, 250 mm;
- Koka lats 45x45@400mm;



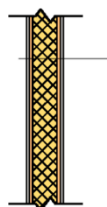
ĀR2

- Koka lats 28x45@600mm;
- Koka lats 28x45@600mm;
- Tyvek Housewrap, vēja barjera;
- Reģispsis GU9mm;
- Koka stali 45x195@600mm;
- PAROC (eXtra) akmensvate, 200 mm;
- Tvaika barjera, ELTETE ELT-PEFOIL 200 0.2mm;
- Koka lats 45x45@600mm;
- PAROC (eXtra) akmensvate, 50 mm;



J1

- Rullveida jumta materiāls;
- OSB/3, 18mm;
- Latojums 25x100@300mm;
- Latojums 45x45@600mm;
- Difūzijas membrāna (vēja barjera), Ampatop Aero;
- Jumta spāres 45x350@600mm;
- PAROC (eXtra) akmensvate, 350 mm;
- Tvaika barjera, ELTETE ELT-PEFOIL 200 0.2mm;
- Koka lats 45x45@400mm;



IS1

- Koka stali 45x95@600mm;
- PAROC (eXtra) akmensvate, 100 mm;